



-Achieving Excellence-

Seaford K-7 NEWS



Government
of South Australia
Department for Education
and Child Development

Wednesday 21st June - Term 2 Week 8

Seaford K-7 School, 39 Jane Street, Port Noarlunga South, SA 5167

Phone: 8386 1197 Fax: 8386 3745

Email: dl.1207.info@schools.sa.edu.au

Website: www.seafordps.sa.edu.au

Diary Dates

JUNE

- 22 9.30am Principal's Tour
Behind the News Excursion – Year 4/5 Burton/Moro
3.15pm - Governing Council Meeting
- 28 Hockey sessions – Years 3-7
- 30 9.10am Assembly
School Disco – Tickets will be pre-sold - \$6 per ticket

JULY

- 4 Special Lunch Day
- 5 Hockey sessions - Years 3-7
Camp Quality Puppet Plays
Reports sent home
- 7 **2.00pm Early dismissal – End of Term 2**

Student Reports and 3 Way Conferences

In the last week of the term students' mid-year reports will be sent home. These reports will tell you how your child is going in all learning areas with the written comment having specific information about English, Maths, behaviour, social skills challenges and goals for next semester. Students who have joined us since the beginning of the term will receive a modified report reflecting their time here. The **Reporting to Parent** brochure included with your child's mid-year report provides information about the reports, grading of curriculum areas and effort and the *3 Way Conference* process. The *3 Way Conferences* are an avenue for students to share and discuss with parents/ carers and teachers their learning successes, future goals and issues if any. Early next term parents/ carers will be invited to attend 3 Way Conferences with their child. More information is to follow next term.

If parents have any questions in regard to the contents of their child's reports, you are encouraged to contact your child's class teacher to discuss this further.

Reports for parents living elsewhere: All parents are entitled to information about their child's learning. A second report can be posted to parents living at another address. Email (dl.1207.info@schools.sa.edu.au) or drop off your request for this information to the Front Office and this will be included in the reporting processes.

Camp Quality Puppet Shows

Camp Quality Puppet Shows have been organised to visit us on Wednesday 5th July. The travelling puppet show for primary schools helps to answer all the difficult questions kids have about cancer, dispels common myths and teaches students how to be supportive and understanding of people living with cancer. It also helps schools create supportive communities for any child affected by cancer, whether they are living with cancer themselves or have a family member with cancer. We are looking forward to seeing this and learning more about it

Nationally Consistent Collection of Data on School Students with a Disability

We have commenced the annual nationally consistent collection of data on school students with disability.

The Collection is aimed at providing all Australian schools, education authorities and the community with a clear picture of the number of students with a disability in schools and the adjustments they require to enable them to participate in education on the same basis as other students.

The data collection will involve the collection of the following information:

- the number of students receiving adjustments to enable them to participate in education on the same basis as other students;
- the level of adjustment provided to students; and
- where known, the student's type of disability.

Under the Collection model the definition of disability is broad and includes learning difficulties, health and mental health conditions.

If your child is identified for inclusion in the Collection, the required information about your child will be included in this year's data collection.

Once the data has been collated, it will be de-identified before providing it to the Australian Government Department of Education. This ensures that no student's identity can be reasonably ascertained.

The data will be used by our school to inform and improve practice for students with disability and by the Department for Education and Child Development to inform state-wide reform initiatives. The Australian Government Department of Education will use the information collected to inform national policy development.

If you have any questions about the data collection please contact me. Further information about the Collection can be found at: <http://www.education.gov.au/nationally-consistent-collection-data-school-students-disability>.

MID YEAR DISCO

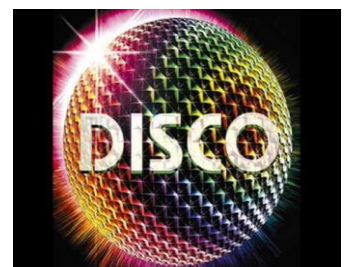
Friday 30th June

4.00pm – 5:15pm –
Rec -Yr 2

5:30pm – 7 pm –
Yrs 3 to 7

Cost: \$6 entry

Tickets need to be purchased by **Thursday 29th June** from the office.



Year 4/5 BTN Excursion

On Friday, the 16th of June 2017, Mrs Gillies 4/5 class went to the ABC studios at Collinswood.

When we got there, we had to take an elevator to the radio station. We got to meet Paul Kelly and Camille O'Sullivan who were singing a song on the radio.

Secondly we went to the Behind the News (BTN) Studios. We met Amelia, Matt, Jack and Sarah who are the hosts of the show; we got to see the cameras point of view to the recording room. Then we got to see ourselves in the cameras. We asked lots of questions to the crew and they were very funny.

After we took the bus to the South Terrace playground. The playground was awesome and there was a spinner ride, a big climbing web and a flying fox!

By Declan Darwen - Year 4



SAPSASA KNOCKOUT NETBALL



Our girls travelled to McLaren Flat for their round 1 match. McLaren Flats extensive experience and height advantage was too strong throughout the match, earning them the victory. For many of our girls this was their first ever netball match! It was great to see them improve throughout the match and to see them show the persistence to keep trying hard, even though the scoreboard wasn't going our way. A great passage of play led to a goal scored by Taylah seconds before the final siren! Great effort girls! A big thank you to Helen from Seaford Storm for coming out to coach on the day. Helen will be forwarding information on about Net Set Go programmes starting in August, so stay tuned!

SAPSASA KNOCKOUT SOCCER

Our boys travelled to Coorara for their round 1 match. Seaford's domination of possession and the ability to keep the ball in their forward half led to an 8-1



victory for our boys, with Coorara's only goal coming in the final 30 seconds of the game! Harrison led the scorer's sheet with 3 goals, Kye scored 2, Cooper, Jedd and Darcy also scored 1 goal apiece. All of the boys put in a great effort, displayed great sportsmanship and teamwork. Our next game takes place in week 9 on Tuesday June 27th at Willunga Waldorf School. Notes would have been sent home. As we will be travelling again, please try and organise travel arrangements for your child ASAP. Please let me know if you need any help with this.

Thank you to all parents for their support both at the matches and with transportation. Thanks, Steve Paulovich

Wellbeing and Engagement Data Collection

Students in our school will take part in a data collection being conducted in Term 3 of this year. A letter summarising key information about the data collection will go home today and more information can be found at www.decd.sa.gov.au (search:wec) or can be collected from the school.

Students in year levels 4, 5, 6, 7, 8 and 9 will participate in the Wellbeing and Engagement Collection. The information collected will help inform work in the education system and broader community to help improve young people's health and wellbeing. If you have any questions please see Belinda.

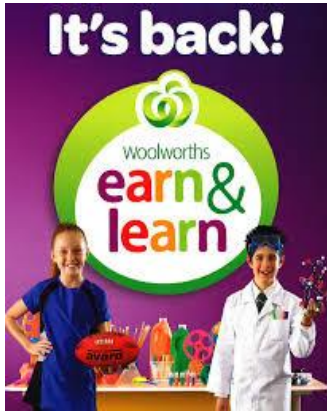
Colds , Coughs & Flu Season

This is the time of the year when coughs and colds are most prevalent. Please be mindful of other students in your child's class and staff if you have a sick child. When you have a sick child **please keep them at home until they are well.**

It is very difficult to break this cycle without students being re-infected, resulting in loss of learning time so it is important to make sure that your child stays at home if they are unwell.



Woolworths Earn & Learn



Our school will be participating in this program again this year.

The promotion begins on Wednesday 26th July when stickers will be available from Woolworths supermarkets.

Sticker cards can be collected from the front office and we will have a collection box.

Anyone who shops at Woolworths can collect stickers for our school – parents,

grandparents, neighbours and friends.

At the end of this promotion we will be eligible to receive resources for our school.

CANTEEN SPECIAL LUNCH DAY

On **Tuesday 4th July** the canteen are offering a Chicken Burger Slider (homemade chicken pattie with cheese, lettuce and mayo) and a chocolate mousse for \$6.50 as a special lunch.

Notes are going home today for pre-ordering. These orders will need to be in by **Thursday 29th June**.

The Canteen will not be open for any other lunch orders on the day.

Annette would love to have some help to get this special lunch organised so if you are able to spare any time on that morning please either let her know or leave your name at the front office.



DECD Respite Care Program

The Respite Care program (RCP) offers the opportunity for parents and caregivers to expand their child's growth and development to enable them to participate and be included in their community

The RCP provides assistance to families through a range of care services to help build capacity within the family unit and prevent 'burn-out'.

Care providers work together with families to plan, promote and implement strategies to achieve a child/young person's goal.

RCP care services can be provided either in the home of the family or in the home of the caregiver weekly, monthly, or in blocks of time, depending on availability. The RCP has a 2 hour minimum block.

Care providers have extensive knowledge, skills and abilities in supporting children and are supported by the specialist RCP coordinator program.

The Respite Care Program is a registered provider with the National Disability Insurance Scheme (NDIS).

For more information please contact:

DECD.RCPAdmin@sa.gov.au **OR** collect an Information sheet from the front office at school.

What does Autism, Asperger's Syndrome or ASD look like?

You may be either aware of or have a child/ren with this condition. A general term, these days is that a child has ASD or *is on the spectrum*. Every child with ASD is different. Many children with ASD are placed very successfully in mainstream classes. Some children with ASD may be placed in special classes or disability units. All the decisions about this are made with the family and by Psychologists and Speech Pathologists. Many families register with support agencies such as Autism SA. The internet has an enormous range of information about ASD; some helpful and some not. Both these web sites have some excellent information:

<http://suelarkey.com.au>
and www.cyh.com.

Below is some useful information in child friendly language that may help you to talk with children about why some children with ASD behave in certain ways.

- .. If someone is smiling, we think they are happy or they want to be friendly with us. Our brain has made a connection between smiling, happiness and friendliness. Someone with ASD finds it very difficult to make that connection.
- .. We are all used to the everyday noises that surround us – music, traffic, kids in a classroom, etc. Someone with ASD may feel really upset by noise and will try to shut it out of her or his ears.
- .. We communicate with each other by talking, listening and watching. Someone with ASD may have trouble learning to speak, or understanding what people mean when they are talking.
- .. We like to be part of a group and hang out with friends. Someone with ASD may not like to be around people, even close family and friends.
- .. We all need to learn how to act around other people. Someone with ASD may act in unusual ways, like flapping their arms, waving their fingers, saying something over and over again yelling loudly and repeatedly, or wanting to do the same thing all the time.
- .. We know that things change and we adapt to changes. Someone with ASD may get very upset when things change, such as when something has been moved in the class room.
- .. All of us are different and unique. People with ASD are also unique and different. Some may have a lot of trouble managing day to day life, while others may only have a few problems
- .. We are able to learn about a lot of different things. Someone with ASD may not be able to learn much about a lot of things, but they could know an enormous amount about one or two things.

Second Hand Uniforms

A reminder that our Second Hand Uniform Shop is open on Tuesdays after school. Please come and see our range of clothes or if you have any uniforms in good condition which you no longer need these can be donated to the school for others to purchase.